



RANGE OF DECORATIVE PRODUCTS

# INNER LAMINATES



INNER LAMINATES



SCAN FOR



E-CATALOGUE



Established in 1989 under the visionary leadership of Bhandari Agencies by Shree Dilipji Bhandari in Hyderabad, Rang Décor has become a beacon of innovation in the realm of interior design and decor. With an unwavering dedication and fueled by passion, we have set new standards, etching our legacy in the industry.

In 2015, we embarked on a transformative journey with the introduction of the iconic brand name “Rang Décor.” This marked not only a change in nomenclature but also embodied our deep-seated mission: to transcend the ordinary and infuse every space with a symphony of colors, textures, and designs that elevate the human spirit.

At the core of our ethos lies a profound commitment to our mission: to be the transformative force that turns ordinary spaces into extraordinary realms of beauty and functionality. Guided by our vision, we strive to create a tapestry of unparalleled elegance and sophistication, where each design element harmonizes seamlessly to reflect the unique personality and essence of its inhabitants.

With unwavering dedication to innovation and excellence, we continue to redefine the boundaries of interior design, enriching lives and spaces with the timeless allure of Rang Décor. Our pledge remains steadfast: to uphold the highest standards of craftsmanship and integrity, ensuring that every product bearing the Rang Décor insignia stands as a testament to our dedication to perfection.



Do not use  
Chemicals for  
Cleaning



Carpenter  
friendly easy  
to apply



Keep away  
from direct  
sunlight

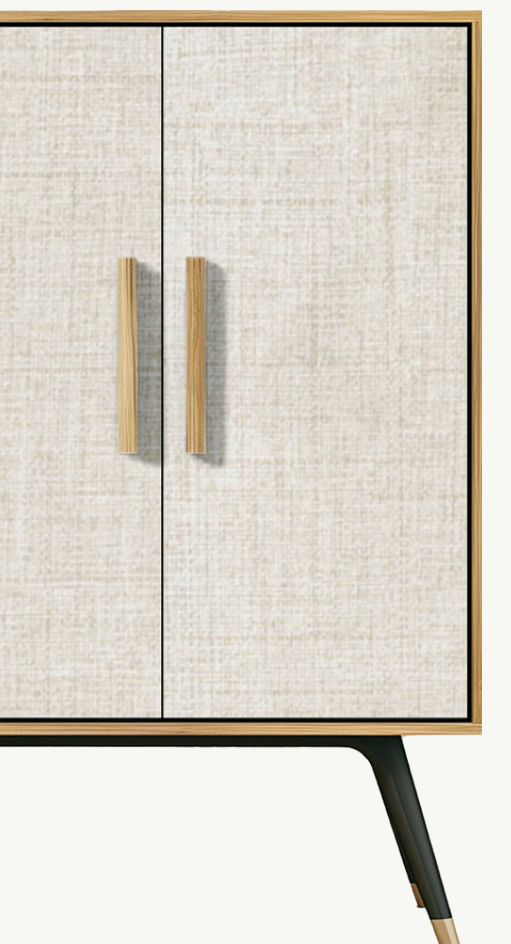


Engineered  
for internal  
use only



Borer free  
Laminates

# BONDED FABRIC SURFACES



**L-436 SF**

THICKNESS : 0.72 MM



FABRIC



**L-421 SF**  
THICKNESS : 0.72 MM



**L-423 SF**  
THICKNESS : 0.72 MM



**L-444 SF**  
THICKNESS : 0.72 MM





Do not use  
Chemicals for  
Cleaning



Carpenter  
friendly easy  
to apply



Keep away  
from direct  
sunlight

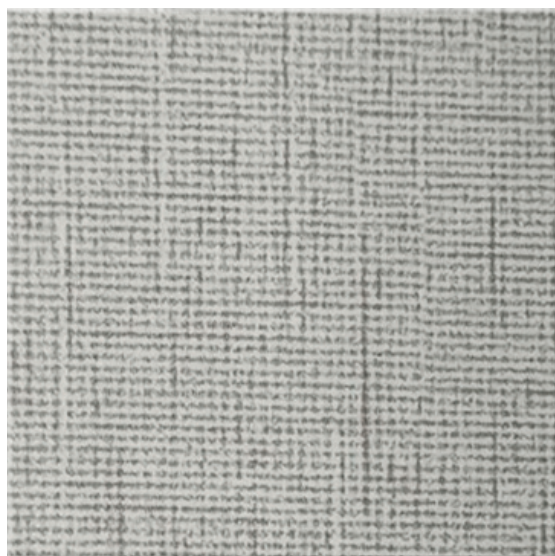


Engineered  
for internal  
use only

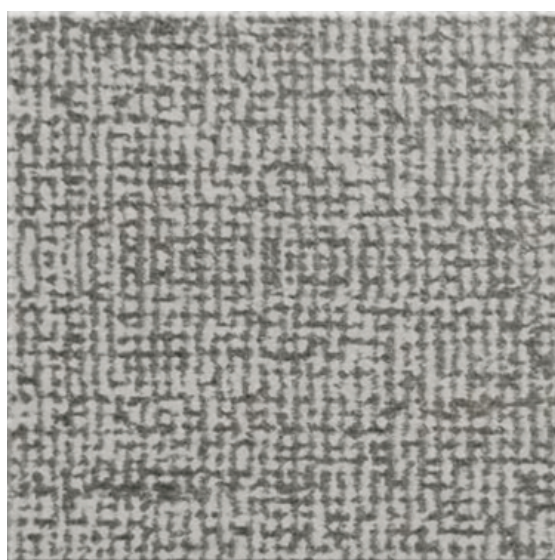


Borer free  
Laminates

# DETAILS AND EASE



**L-442 SF**  
THICKNESS : 0.72 MM

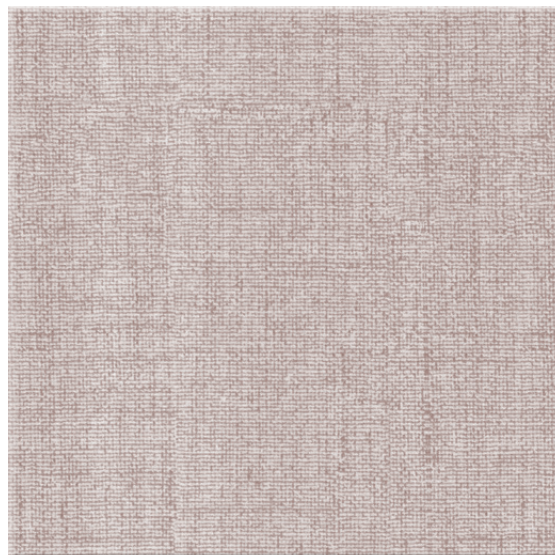


**L-445 SF**  
THICKNESS : 0.72 MM

Get the ease of laminates and  
details of fabric in one product.

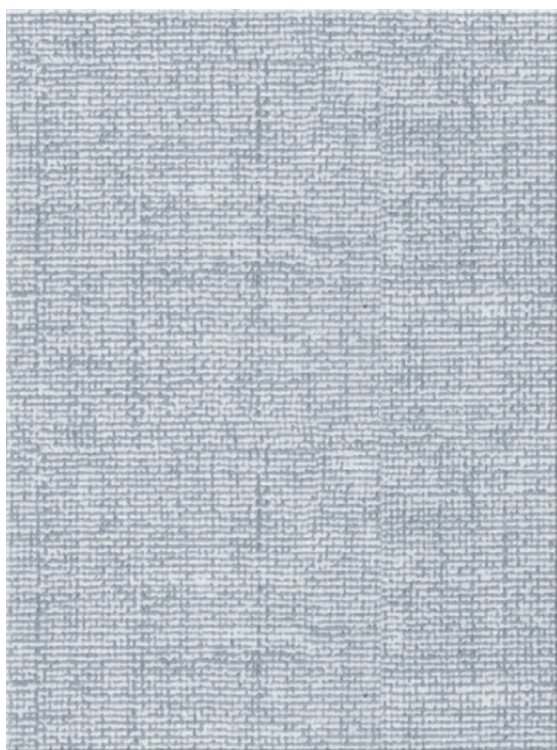


# FABRIC



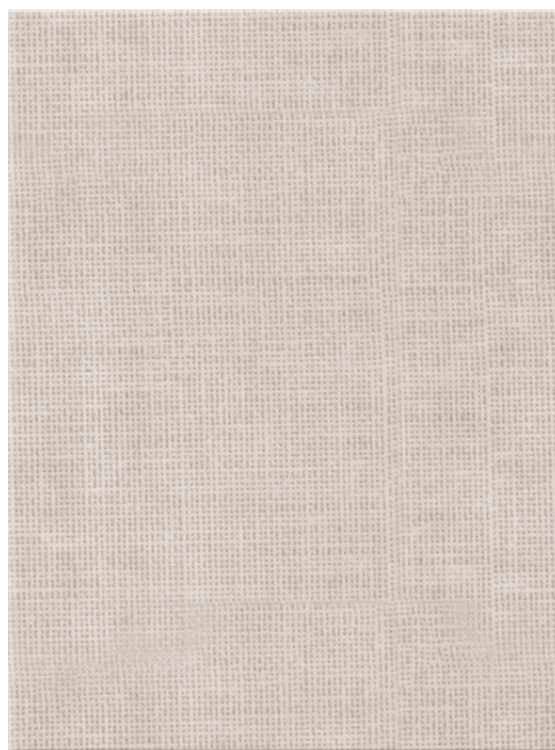
**L-408 SF**

THICKNESS : 0.72 MM, 0.92 MM



**L-414 SF**

THICKNESS : 0.72 MM, 0.92 MM



**L-415 SF**

THICKNESS : 0.72 MM





Do not use  
Chemicals for  
Cleaning



Carpenter  
friendly easy  
to apply



Keep away  
from direct  
sunlight



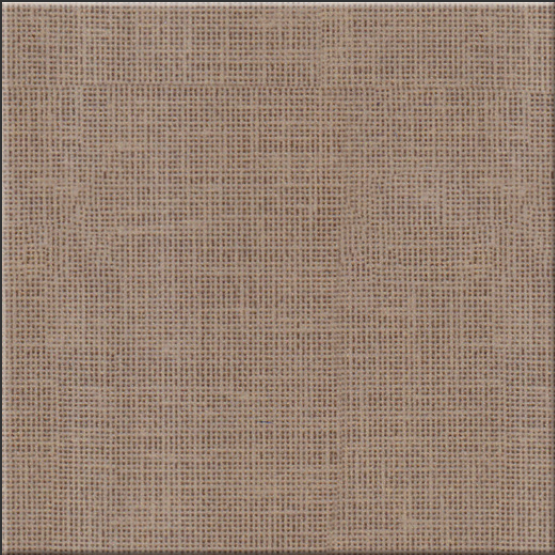
Engineered  
for internal  
use only



Borer free  
Laminates



These fabric textures  
are meticulously  
designed to withstand  
any weather and to be  
scratch- resistant!



**L-416 SF**  
THICKNESS : 0.72 MM

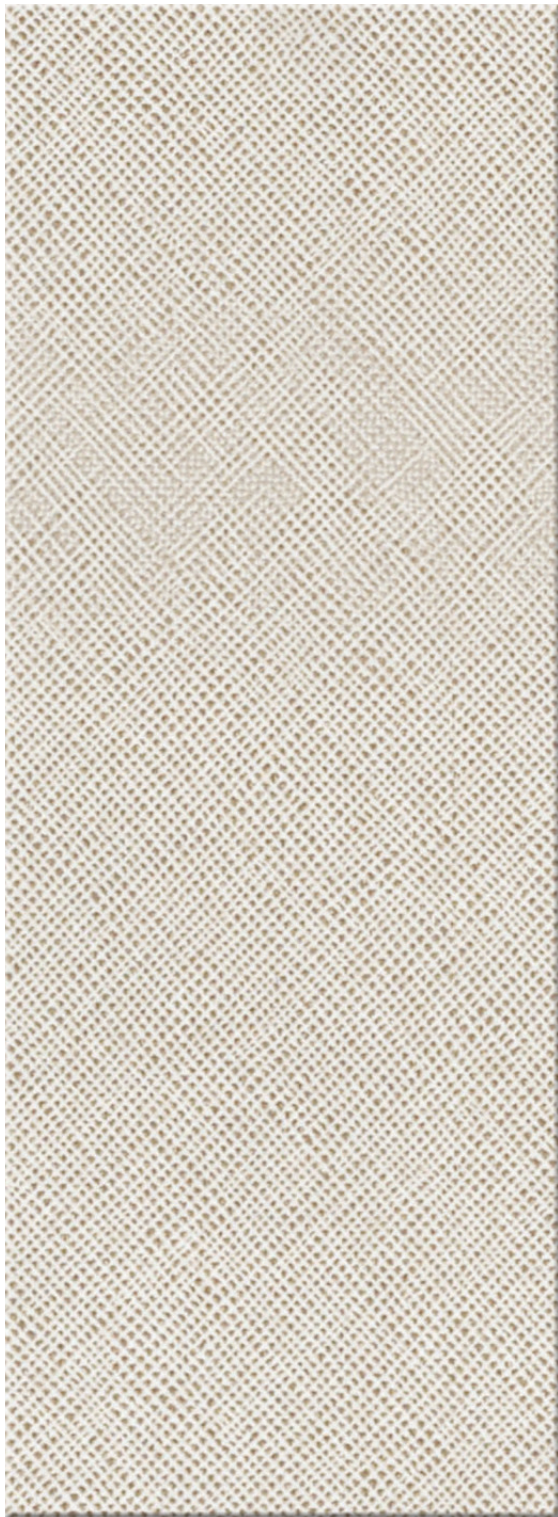


**L-438 SF**  
THICKNESS : 0.72 MM



**L-437 SF**  
THICKNESS : 0.72 MM

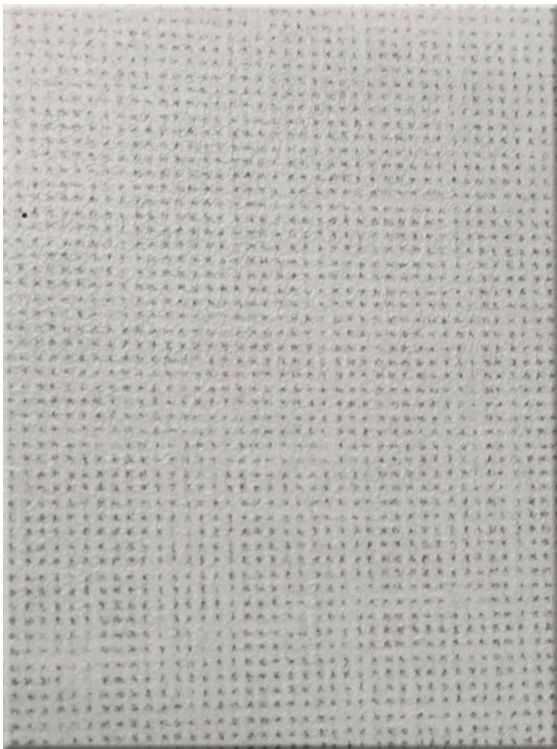




**L-439 SF**  
THICKNESS : 0.72 MM



**L-420 SF**  
THICKNESS : 0.72 MM



**L-443 SF**  
THICKNESS : 0.72 MM





Do not use  
Chemicals for  
Cleaning



Carpenter  
friendly easy  
to apply



Keep away  
from direct  
sunlight

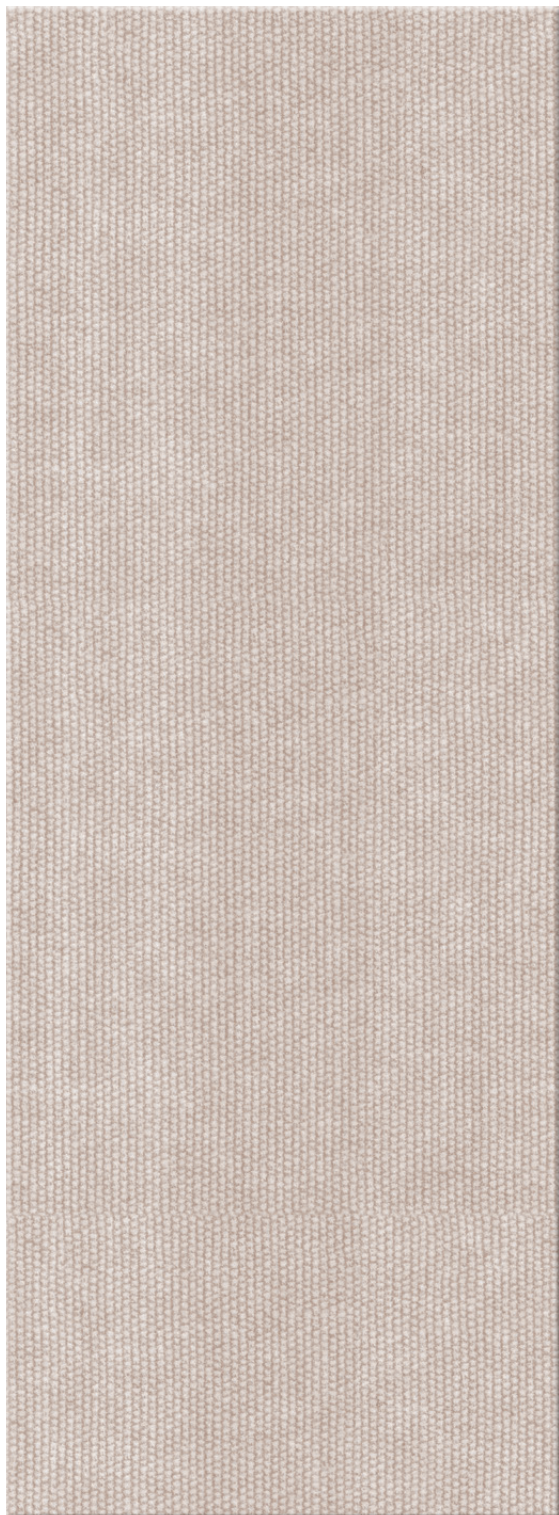


Engineered  
for internal  
use only



Borer free  
Laminates

The wide range of  
premium fabric laminates!



**L-404 SF**

THICKNESS : 0.72 MM, 0.92 MM



**L-440 SF**

THICKNESS : 0.72 MM



**L-446 SF**

THICKNESS : 0.72 MM

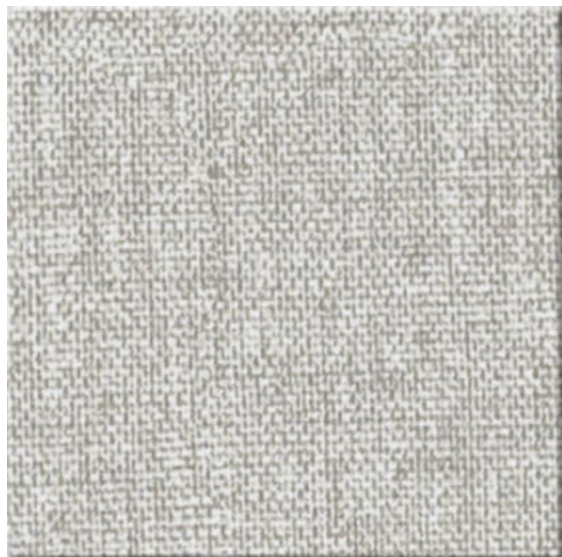




**L-441 SF**  
THICKNESS : 0.72 MM



**L-411 SF**  
THICKNESS : 0.72 MM



**L-424 SF**  
THICKNESS : 0.72 MM



**L-422 SF**  
THICKNESS : 0.72 MM



Do not use  
Chemicals for  
Cleaning



Carpenter  
friendly easy  
to apply



Keep away  
from direct  
sunlight



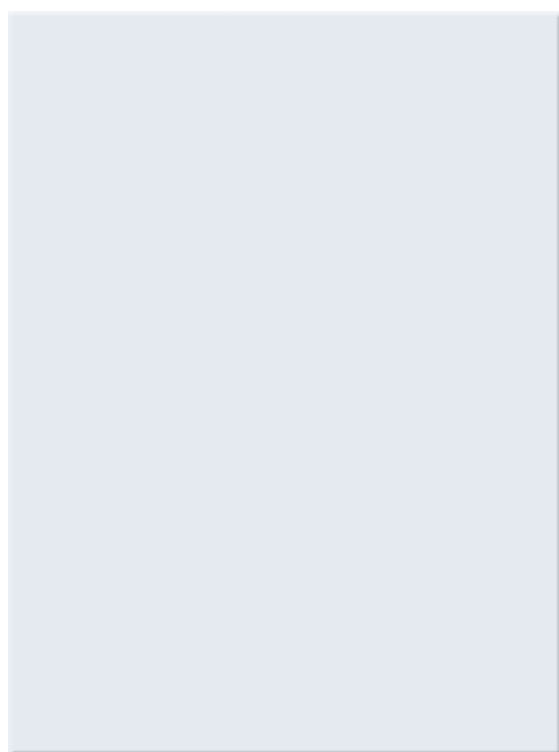
Engineered  
for internal  
use only



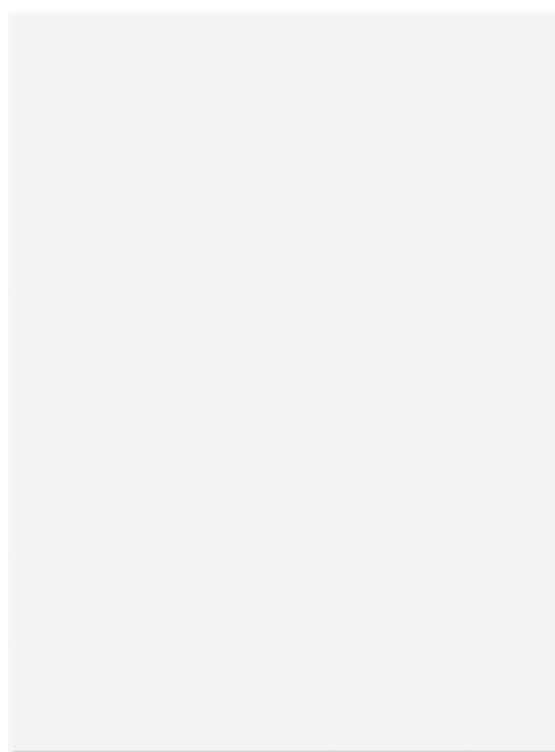
Borer free  
Laminates



Creating a versatile  
and balanced tonal  
range. These shades  
provide a modern,  
neutral foundation.



**L-402 MT**  
THICKNESS : 0.72 MM



**L-401 MT/SF**  
THICKNESS : 0.72 MM, 0.92 MM





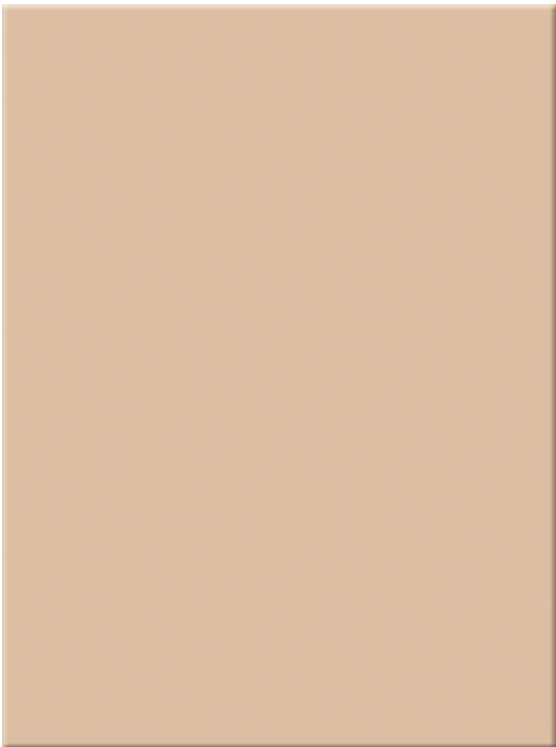
**L-403 SF**  
THICKNESS : 0.72 MM



**L-426 SF**  
THICKNESS : 0.72 MM



**L-427 SF**  
THICKNESS : 0.72 MM



**L-425 SF**  
THICKNESS : 0.72 MM





Do not use  
Chemicals for  
Cleaning



Carpenter  
friendly easy  
to apply



Keep away  
from direct  
sunlight



Engineered  
for internal  
use only



Borer free  
Laminates

# COOL DECOR STYLES



**L-431 SF**

THICKNESS : 0.72 MM





**L-430 SF**  
THICKNESS : 0.72 MM



**L-433 SF**  
THICKNESS : 0.72 MM



**L-434 SF**  
THICKNESS : 0.72 MM

# TECHNICAL SPECIFICATION

Sr. No.	Performance Category	Grade	Requirement Of Is 2046	Actual Teast Result
1	Resistance to Colour Change	HGS	Min. 5 Wool STD.	Less than 5
2	Resistance to Staining	HGS	Not worse than 5	5 (No visible change)
	a) Citric Acid Solution			
	b) Ink			
	c) Rectified Spirit			
	d) Iodine Solution			
	e) Kerosinr Oil			
	f) Silver Nitrate Solution			
	g) Sodium Hydroxide Solution			
3	Resistance to Immersion in Boiling Water	CGF		
	a) Boiling Water Absorption (%)		Max. 5.0	2.9
	b) Increase in Thickness (%)		Max. 7.0	2.2
	c) Effect on The Surface		Degree 5	Degree 5 (No visible change)
4	Flexural Strength	HGS	No Requirement	1666.6 kg/cm2
5	Tensile Strength	HGS	No Requirement	533.3 kg/cm2
6	Resistance to Dry Heat at 180 °C	CGS	Degree 3 to 4	Degree 5 (No visible change)
7	Warping (Flatness)	CGS	Max. 10 for Double Faced	6.5
8	Thickness Variation	CGS	Max% 0.20 for 3.0mm Thickness	0.06
9	Dimensional Stability at Deviated	CGS		Satisfactory
	Temperature Visual Examination			
10	Machining Test	CGS		Satisfactory
11	Resistance to Spread of Flame	CGS	Class B	Class A
12	Dimensional Stability at 20€	CGS		
	a) Machine Direction (%)		Max. 0.45%	0.06
	b) Transverse Direction (o/o)		Max. 0.85%	0.05





## PRODUCT CHARACTERISTICS

- Our Liner laminates provide much of class together with protection from humidity.
- Reduces warp-age to 3 ply fabrication .
- Ultra-Thin laminates useful in balancing sides.

## SPECIFICATION

- Size : 2440mm X 1220mm
- Thickness : 0.72mm, 0.92mm
- Finish : Matt and Sued

## STORAGE

- Please store the sheets horizontally with a thick board at top and bottom to avoid any damage.
- Vertical storing is not recommended for Liner Laminates.
- Protect it from water and moisture and never store directly on the floor or touching the wall.

## MAINTENANCE

- The Rang Liners need to be cared as other laminates, no extra or special maintenance needed.
- The decorative surface of the Rang Liner may be cleaned with a damp cloth, mild soaps and warm water.

## NOTE

- Do not use cleaners that contain acids or abrasives.
- Do not use any beach except hypochlorite followed by clean water to remove stains.
- We will not be responsible if:
  - Accidents, Abuse or Misuse Happens.
  - Exposed to extreme heat, Temperature or Corrosive Atmosphere.
  - Improper Installation or Application.
  - Wrong Maintenance.



Do not use  
Chemicals for  
Cleaning



Carpenter  
friendly easy  
to apply



Keep away  
from direct  
sunlight



Engineered  
for internal  
use only



Borer free  
Laminates



# Rang<sup>®</sup>

RANGE OF DECORATIVE PRODUCTS

## OUR RANGE OF PRODUCTS

**LITIA<sup>®</sup>**  
FLUTED ACRYLIC

**MASKARA<sup>®</sup>**  
6H ACRYLIC LAMINATE

**Charco<sup>®</sup>**  
CHARM  
DECORATIVE CHARCOAL PANELS

**ONIT<sup>®</sup>**  
SEAMLESS CHARCOAL

**ART BY ONE<sup>®</sup>**  
DECORATIVE LOUVERS

**CANIS<sup>®</sup>**  
PREMIUM MDF SLATS

**GROOVE<sup>®</sup>**  
FOREST COLLECTION  
LOUVERS

**GROOVE<sup>®</sup>**  
EARTH COLLECTION  
LOUVERS

**GROOVE<sup>®</sup>**  
PASTEL COLLECTION  
LOUVERS

**POWER  
BOARD**  
500 X PVC, WPC BOARD

**ECO  
BOARD**  
AFFORDABLE WPC BOARD

**HYBRID  
BOARD**  
500 X PVC, WPC BOARD

**FADED<sup>™</sup>**  
ACRYLIC 2.0

**WALLMATE<sup>™</sup>**  
DECORATIVE LOUVERS

**BERN<sup>®</sup>**  
THE META THERMO LAM

**NAZRANA<sup>®</sup>**  
ENGRAVED ACRYLIC

**OHHO<sup>®</sup>**  
PREMIUM MICA



rangdecor.in  
Follow us on :   

25  
26